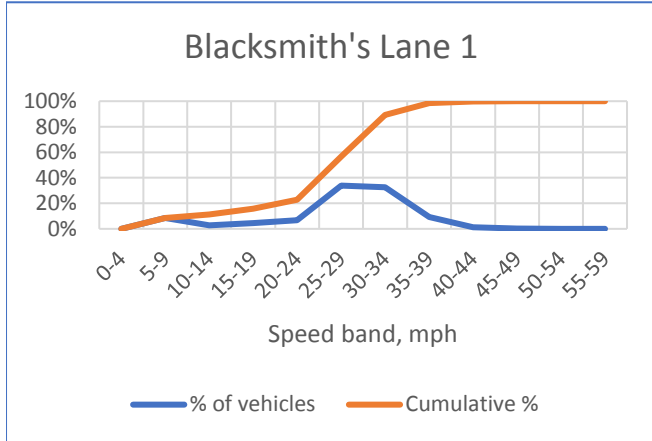
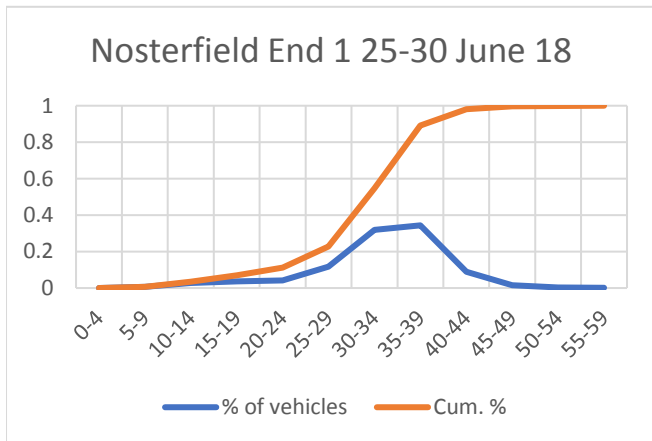


**Location details**

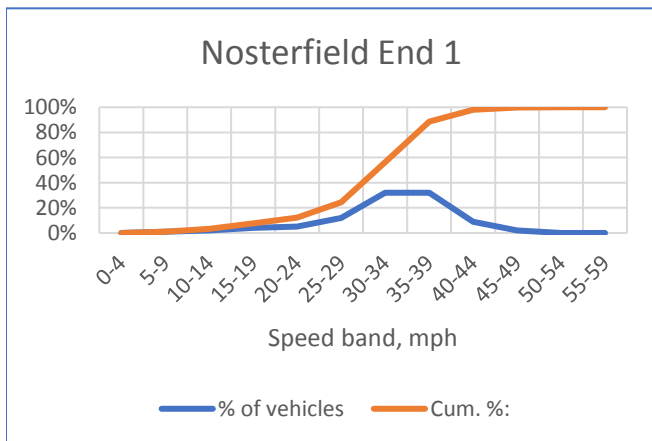
Blacksmith's Lane 1	Approaching Tee junction with Chuch Road from East
Nosterfield End 1	Next to #1-4 Nosterfield End looking West
Nosterfield End 2	Approaching Tee junction with Haverhill Road from East
Carsey Hill 1	Approaching Tee jcn. at Main Street looking up Carsey Hill
Carsey Hill 2	Approaching Tee jcn. at Main Street looking up New Road
Main Street 1	Opposite Chainey Pieces looking looking East



12 - 16 May 2018	
Total number of vehicles:	1284
No. above speed limit:	557
Maximum recorded speed:	48

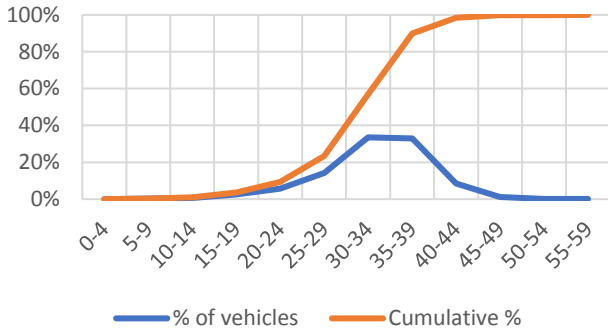


25-30 June 2018	
Total number of vehicles:	2269
No. above speed limit:	246
Maximum recorded speed:	57



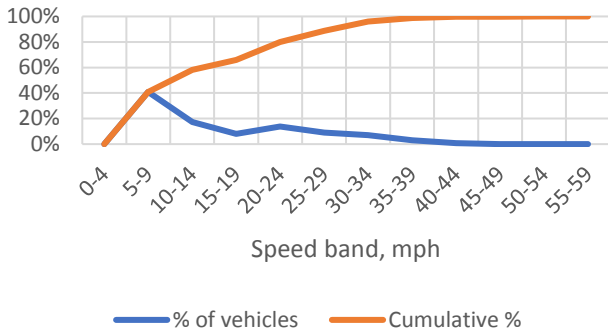
17 - 20 May 2018	
Total number of vehicles:	1166
No. above speed limit:	133
Maximum recorded speed:	53

### Nosterfield End 2



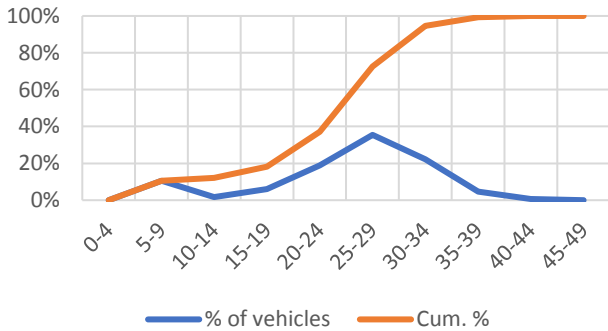
21 - 24 May 2018	
Total number of vehicles:	3470
No. above speed limit:	347
Maximum recorded speed:	58

### Carsey Hill 2



25 May - 4 June 18	
Total number of vehicles:	2966
No. above speed limit:	331
Maximum recorded speed:	58

### Main Street 1 12-17 August 2018



12-17 August 2018	
Total number of vehicles:	1103
No. above speed limit:	303
Maximum recorded speed:	42